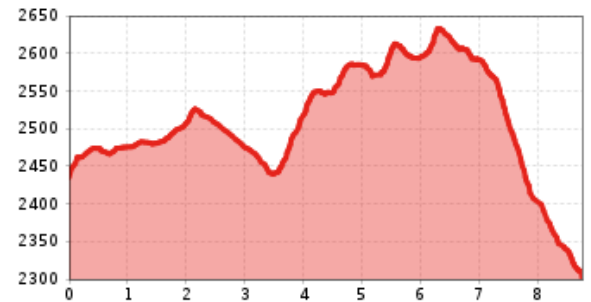
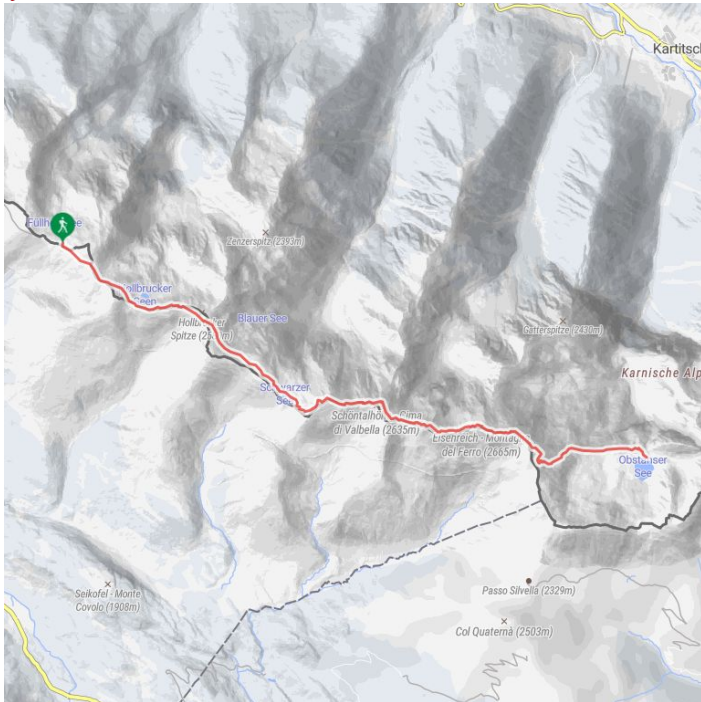


Carnic altitude trail. Stage 2: Sillianer Hütte- Obstansersee Hütte

Altitude profile



The most important at a glance

distance
8.7 km

altitude meters uphill
503 m

walking time uphill
4:30 h

highest point
2644 m

difficulty
average

starting point: Sillianer Hütte
destination point: Obstansersee Hütte 2304m
best season: JUN, JUL, AUG, SEP

Gpx file

Interactive map

[download>](#)

[open>](#)

Description

Starting point is the Leckfeldalm and from Sillianer Hütte we follow the well signposted route no. 403 heading east, past the Hornischegg and Hollbrucker Spitze to Hochgräntensee. There is a war cemetery on its northern banks. We proceed via several hairpin bends to the north side of the summit of the Demut, continuing to the summit of the Eisenreich. Just before the summit of the Eisenreich, route 403 branches off to the left at Obstansersee Hütte.