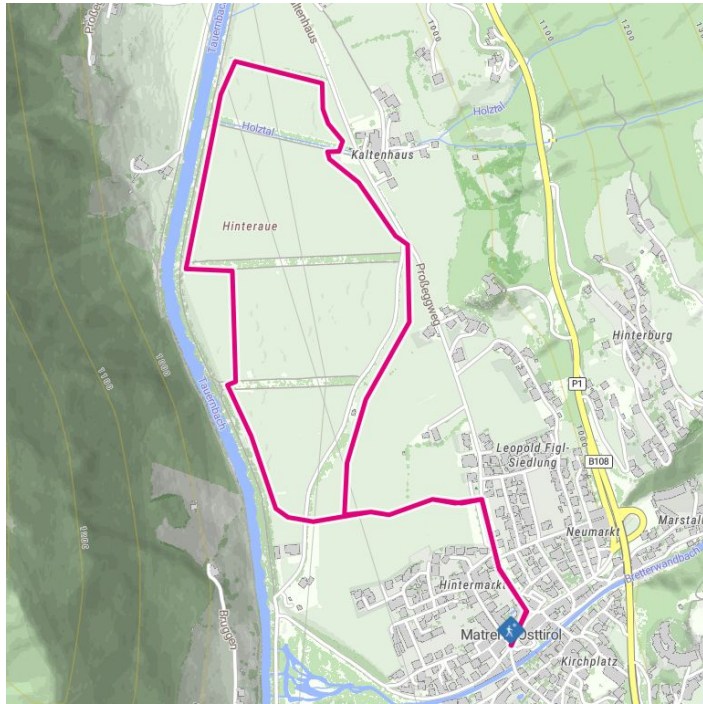
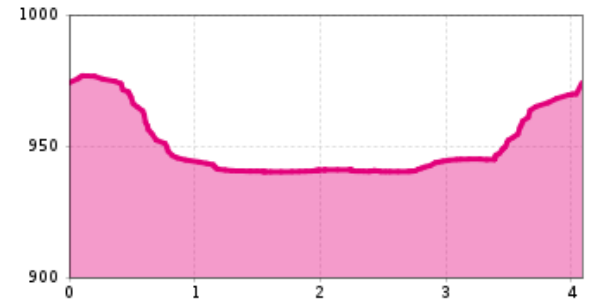


## Winter hiking trail Hinteraue



### Altitude profile



## The most important at a glance

distance  
3.7 km

altitude meters uphill  
35 m

altitude meters downhill  
35 m

total walking time  
1:10 h

highest point  
970 m

difficulty  
easy

state:  
closed

fitness:

\* \* \* \* \*

public transport:

951 Matrei i.O. Korberplatz

parking:

starting point:

destination point:

best season:

route typ:

Parkplatz Korberplatz, Parkplatz Kreuzgbühel gebührenpflichtig  
Parkplatz Kreuzbühel  
Parkplatz Kreuzbühel  
JAN, FEB, MAR, DEC  
circuit family tour

## arrival

Parking spot

Car park Korberplatz

## Gpx file

## Interactive map

[download>](#)

[open>](#)

## Description

The Hinteraue circular hiking trail starts at the Kreuzbühel car park and leads along a field path to "Hinteraue". This extensive area is ideal for taking a winter hike with your family due to its flat, large fields. The distinctive rows of trees (popularly known as "wind belts") in this area protect the surrounding fields from the "Tauernwind". The glittering rays of the sun are reflected in the frozen Tauernbach stream and the quiet splashing makes you feel calm.