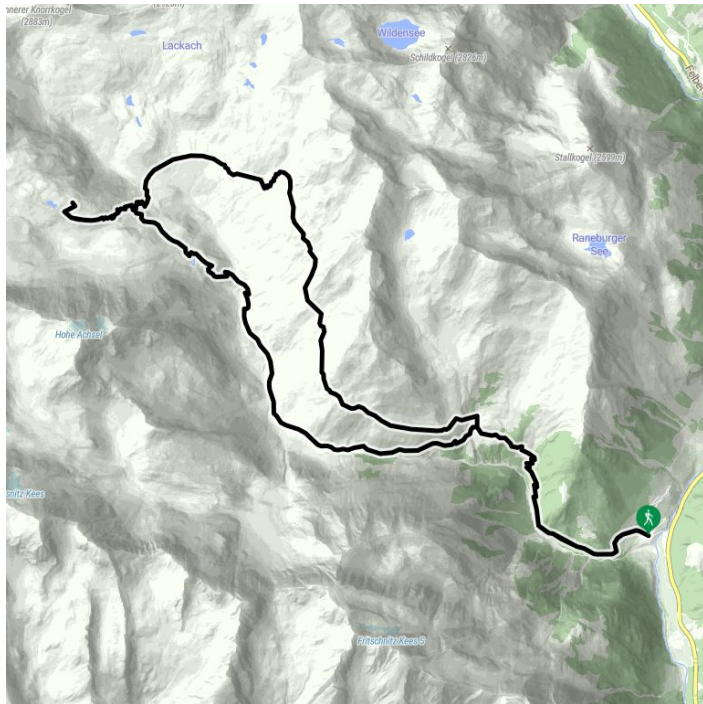
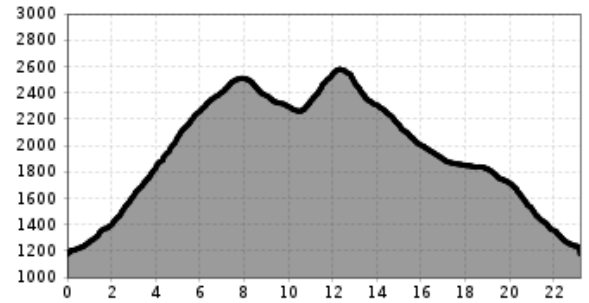


# Hiking tour to Badener Hütte 2.608m via Gaßla-Anda-Weg

Long tour through the wild Frosnitztal



## Altitude profile



## The most important at a glance

distance  
23.2 km

altitude meters uphill  
1754 m

altitude meters downhill  
1754 m

walking time uphill  
6:45 h

walking time downhill  
5:15 h

total walking time  
12 h

highest point  
2608 m

difficulty  
difficult

fitness:

\* \* \* \* \*

technique:

\* \* \* \* \*

public transport:

**starting point:** Matrei in Osttirol Abzweigung Gruben  
**destination point:** Gruben  
**best season:** JUN, JUL, AUG, SEP

## Gpx file

[download>](#)

## Interactive map

[open>](#)

## Description

This challenging hiking tour starts at the bus station Gruben. From here, follow the path no. 921 into Frosnitzal Valley. Walk down the driveway, which later becomes very steep and leads to Untere Katalalm. The shortest way is the path no. 922, which starts on the left hand. If you want to do the round course, you follow the path no. 61 on the right to Obere Katalalm. This is where the actual Gaßla-Anda-Weg begins. Behind the Auerlacke, this path leads to the slopes of Schafalm in the west. At unchanged gradient, the path leads to the derelict Knappenhaus (miners' house). On towards the north, zig zag down the slope and walk on until you get to the bridge across Löbberbach Stream. Here is where the winding ascent to Badener Hütte begins. Once you have arrived up there, you can enjoy the magnificent panoramic view onto the national park's mountains.

To climb back down, you first walk about 300 metres down and take the right branch at the bifurcation. Cross two streams until you get to Lake Achselsee and walk on to the Steinsteig (stone bridge) to cross Frosnitzbach Stream. The path alongside the stream leads you out of the valley, passing by Zedlacher- and Mitteldorfer Alm. Due to the deep and narrow topographical depressions along the stream's course, you will have to master a short ascent before you follow the course via Katalalm that you already know back to Gruben.