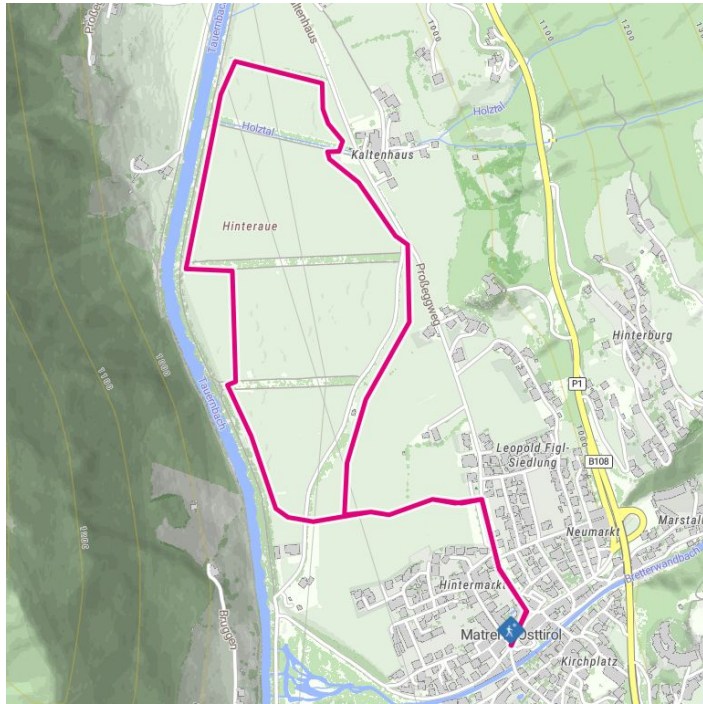
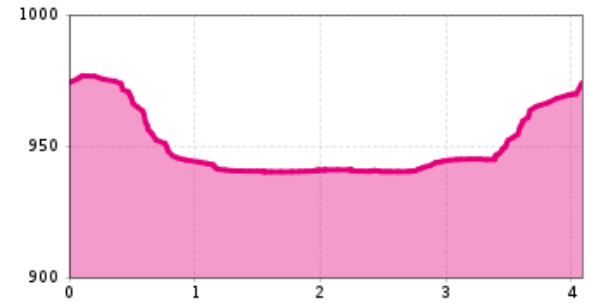


Winter hiking trail Hinteraue



Höhenprofil



The most important at a glance

distance 3.7 km	altitude meters uphill 35 m	altitude meters downhill 35 m	total walking time 1:10 h
highest point 970 m	difficulty easy	state: Geschlossen	

fitness: * * * * *

public transport:

951 Matrei i.O. Korberplatz

parking:

starting point: Parkplatz Korberplatz, Parkplatz Kreuzgbühel gebührenpflichtig
destination point: Parkplatz Kreuzbühel
best season: JAN, FEB, MAR, DEC
route typ: circuit family tour

arrival

Bus stop
Matrei i. O. Korberplatz
Car park
Car park Korberplatz
Parkplatz Kreuzbühel

Gpx file

[download>](#)

Interactive map

[open>](#)

Beschreibung

The Hinteraue circular hiking trail starts at the Kreuzbühel car park and leads along a field path to "Hinteraue". This extensive area is ideal for taking a winter hike with your family due to its flat, large fields. The distinctive rows of trees (popularly known as "wind belts") in this area protect the surrounding fields from the "Tauernwind". The glittering rays of the sun are reflected in the frozen Tauernbach stream and the quiet splashing makes you feel calm.