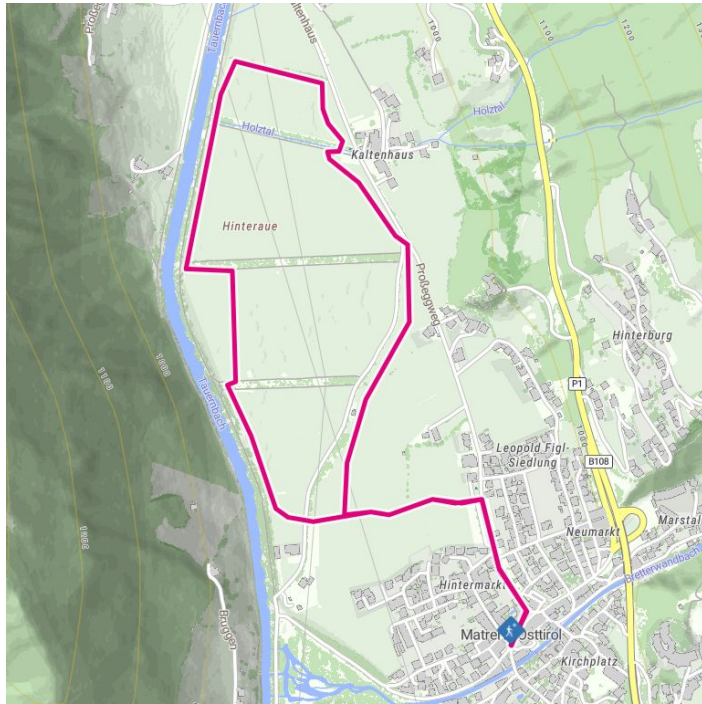
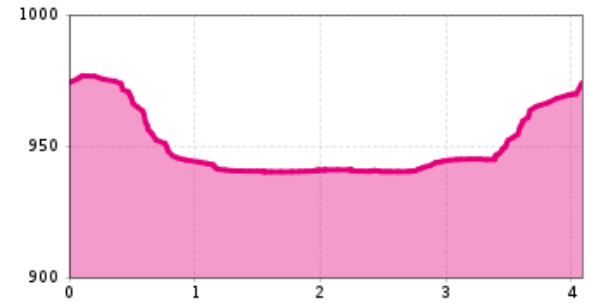


Winter hiking trail Hinteraue



Altitude profile



The most important at a glance

distance
3.7 km

altitude meters uphill
35 m

altitude meters downhill
35 m

total walking time
1:10 h

highest point
970 m

difficulty
easy

state:
closed

fitness:

* * * * *

public transport:

951 Matrei i.O. Korberplatz

parking:

starting point:

destination point:

best season:

route typ:

Parkplatz Korberplatz, Parkplatz Kreuzgbühel gebührenpflichtig
Parkplatz Kreuzbühel
Parkplatz Kreuzbühel
JAN, FEB, MAR, DEC
circuit family tour

arrival

Parkplatz

Car park Korberplatz

Gpx file

[download>](#)

Interactive map

[open>](#)

Description

The Hinteraue circular hiking trail starts at the Kreuzbühel car park and leads along a field path to "Hinteraue". This extensive area is ideal for taking a winter hike with your family due to its flat, large fields. The distinctive rows of trees (popularly known as "wind belts") in this area protect the surrounding fields from the "Tauernwind". The glittering rays of the sun are reflected in the frozen Tauernbach stream and the quiet splashing makes you feel calm.