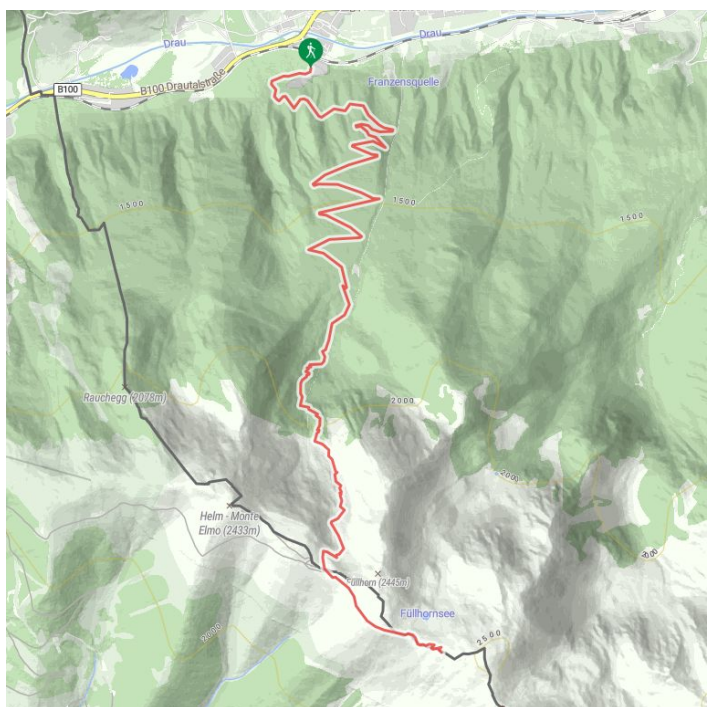


# Carnic altitude trail. Stage 1: Arnbach - Sillianer Hütte



## Altitude profile



## The most important at a glance

distance  
9.5 km

altitude meters uphill  
1350 m

walking time uphill  
4 h

highest point  
2447 m

difficulty  
easy

starting point: Dorfzentrum Sillian  
destination point: Sillianer Hütte

## Gpx file

[download>](#)

## Interactive map

[open>](#)

## Description

The official entry point to the Carnic altitude trail proceeds from Alpenhotel Weitlanbrunn (the hamlet of Arnbach) initially via a wide forest trail, in flat hairpin bends up to 1660 m. Leave the trail here, bearing left. From "Hofer Bankl" the Carnic altitude trail is then also the route of the local trail. Follow the trail to the forest limits and continue to Sillianer Hütte.

Further ascent options to Sillianer Hütte:

- 1) Via route 471 and Leckfeldalm (4 hours walking time from Sillian, 2 hours walking time from Leckfeldalm)
- 2) Take the Vierschach cable car via Helm (2 hours walking time from Helm mountain station)