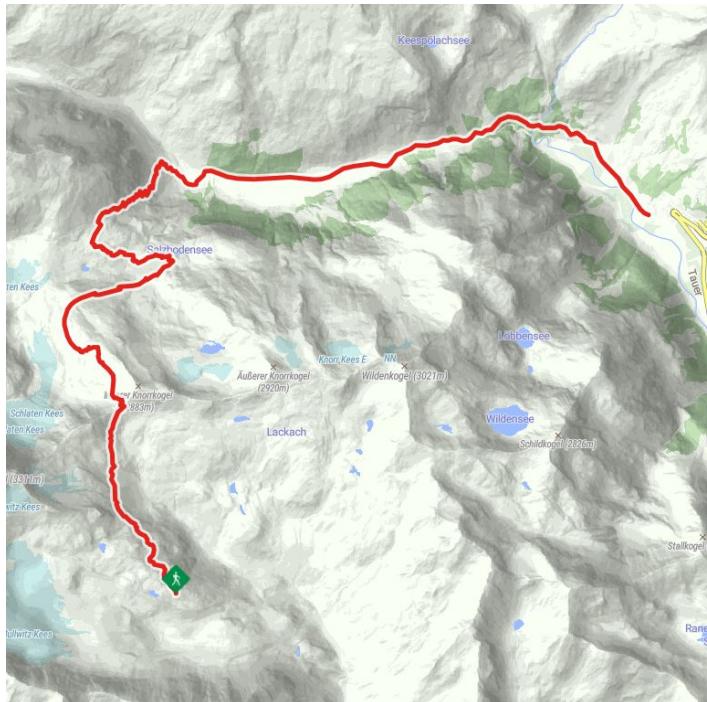
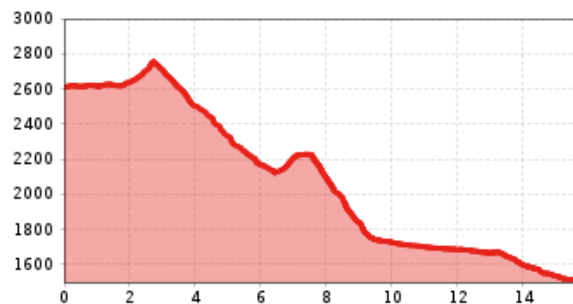


The final stage of the high-altitude long-distance hiking trail



Altitude profile



The most important at a glance

distance 15.6 km	altitude meters uphill 326 m	altitude meters downhill 1416 m	total walking time 5:45 h
----------------------------	--	---	-------------------------------------

highest point 2770 m	difficulty average
--------------------------------	------------------------------

fitness:



technique:



starting point: Badener Hütte 2.608m
destination point: Matreier Tauernhaus 1.512m
best season: JUL, AUG, SEP

Gpx file

Interactive map

[download>](#)

[open>](#)

Description

From the Badenerhütte you climb up to the Löbbentörl, one of the best places regarding panoramic view, and then down towards the Salzbodensee. Shortly before you turn left and follow the signs Gletscherweg, direction Neue Prager Hütte. The view to the left in the direction of Schlattenkees invites you to take a short break. For brisk hikers, a short detour to the glacier is also an option. On the descent, follow the signs to Venedigerhaus Innerschlöß. In many serpentine you reach the **Venedigerhaus Innerschlöß** after about 4.5 hours. From there on foot, by hut cab or panorama train to the **Matreier Tauernhaus**.