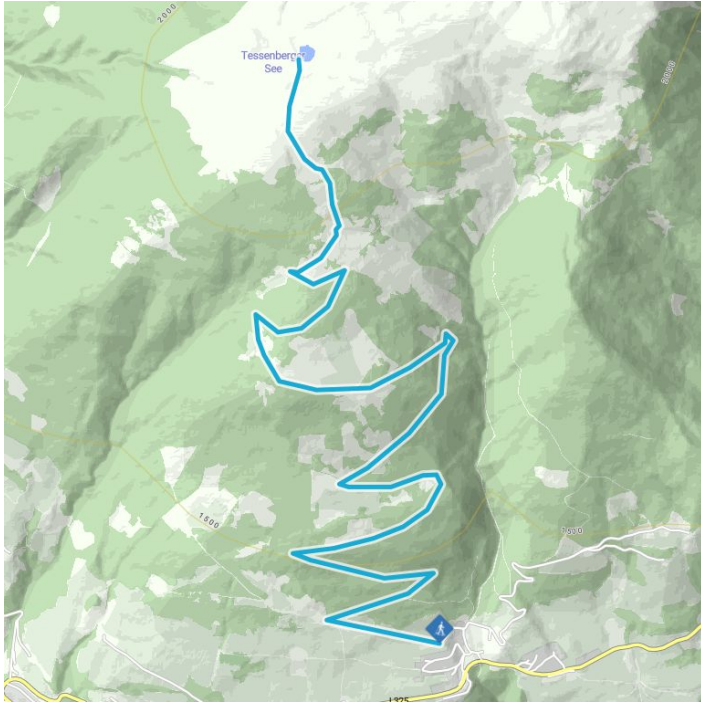
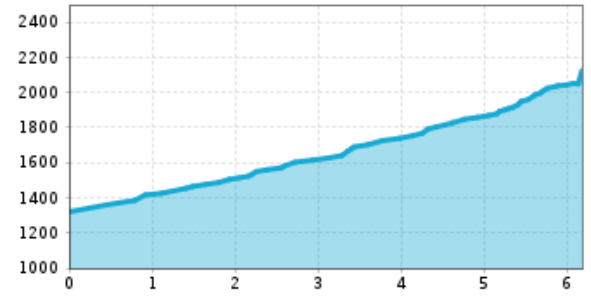


Tessenberger See from Heinfels



Altitude profile



The most important at a glance

distance
6.2 km

altitude meters uphill
800 m

walking time uphill
2 h

highest point
2126 m

difficulty
average

fitness:

* * * * *

technique:

* * * * *

public transport:

Mit dem Bus bis zur Haltestelle "Panzendorf Gemeindeamt Heinfels"

parking:

Parkplatz Gemeindeamt Heinfels
Tessenberg

starting point:

destination point:

best season:

Tessenberger See
JAN, FEB, MAR, DEC

Gpx file

Interactive map

[download>](#)

[open>](#)

Description

Follow the woodland trail to Tessenberger Alm (not open). Continue via the Alpine area enjoying the wonderful panorama view to Tessenberger See. Proceed back along the same route or head down to Außervillgraten (2 hours).