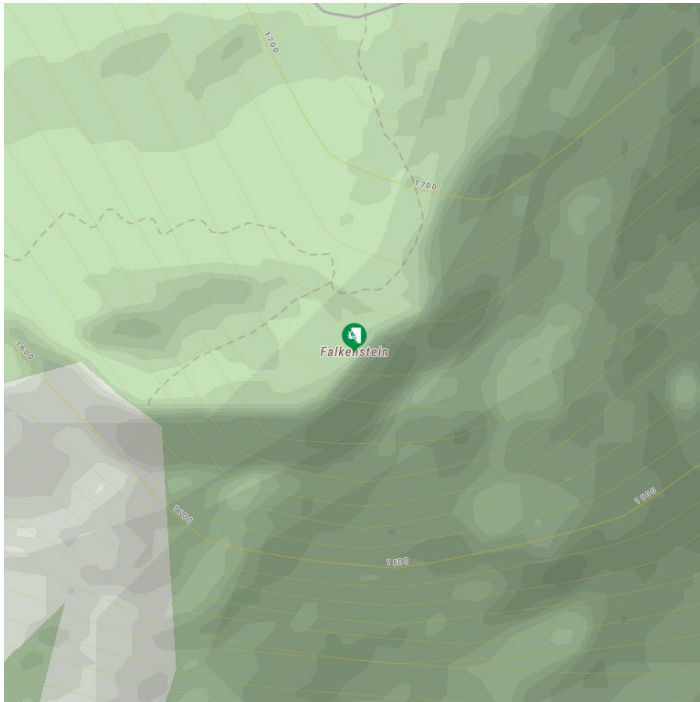


Falkenstein and its well-known climbing crag is close to the towns of Glanz and Hinterburg.



The most important at a glance

number of routes
145

sea level starting point
1550 m

exposition
S

walking time access min.
20 min

walking time access max.
20 min

parking: Parkplatz Glanz
Gestein: lime
access: 10 - 20 Min. vom Parkplatz
number of routes at the fifth difficulty level: 1
number of routes at the sixth difficulty level: 2
number of routes at the seventh difficulty level: 5
number of routes at the eighth difficulty level: 16
number of routes at the ninth difficulty level: 9
difficulty level:

Gpx file

Interactive map

[download>](#)

[open>](#)

Description

1550 metres altitude, 4 sectors, walls of between 10-50 metres, mainly south-facing walls, compact limestone, for the most part vertical to overhanging, the majority being wall climbs. Securing: good; with bolts and anchors, Positions mostly with chain and carabiner, own chockstones not required. Around 80 routes, for the most part chalked up at the entrances.

This climbing area in East Tyrol is only recommended in the afternoon in the summer. Since it is south-facing, it may also be climbed in winter. Route difficulty level from level 7. Access: Mauterndorf - Glanz.

Topos

