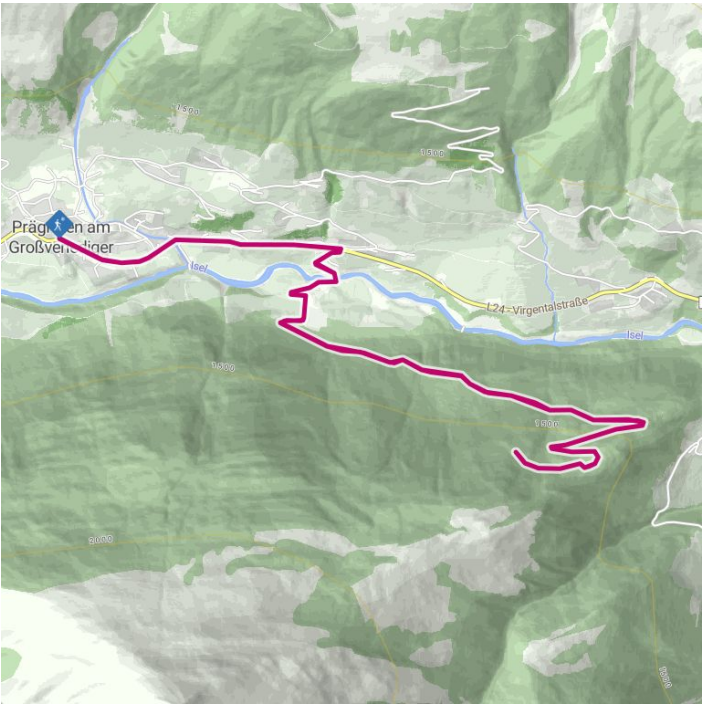
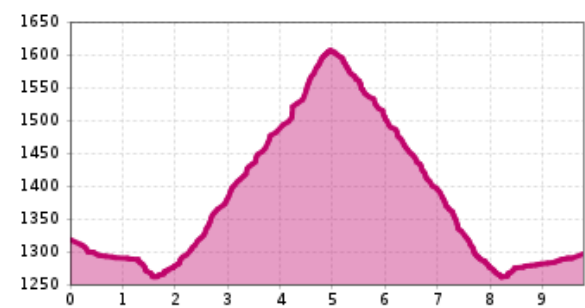


Superb views to the mountain village of Prägraten a. G.



Altitude profile



## The most important at a glance

distance  
9.7 km

altitude meters uphill  
390 m

altitude meters downhill  
417 m

walking time uphill  
2:30 h

walking time downhill  
1:30 h

total walking time  
4 h

highest point  
1610 m

difficulty  
easy

state:  
closed

fitness:

\* \* \* \* \*

technique:

\* \* \* \* \*

public transport:

Prägraten a. G. Gemeindeamt (municipal office)

parking:

Alternativ: Prägraten a. G. Wallhorn

Prägraten a. G. Gemeindeamt (municipal office)

starting point:

destination point:

best season:

route typ:

Alternativ: Prägraten a. G. Wallhorn

Tourist information Prägraten a. G., bus stop Wallhorn or sports ground

Tourist information Prägraten a. G., bus stop Wallhorn or sports ground

JAN, FEB, MAR, DEC

family tour

## Gpx file

## Interactive map

[download>](#)

[open>](#)

## Description

From the centre of the village, the path first leads along the road to the Wallhorn district. At the bus stop, turn right and follow the road to the sports field. From here the prepared winter hiking trail leads steadily uphill along a forest path to the Berger-Eck. Beautiful view of the two villages of Prägraten a. Großvenediger and Virgen.